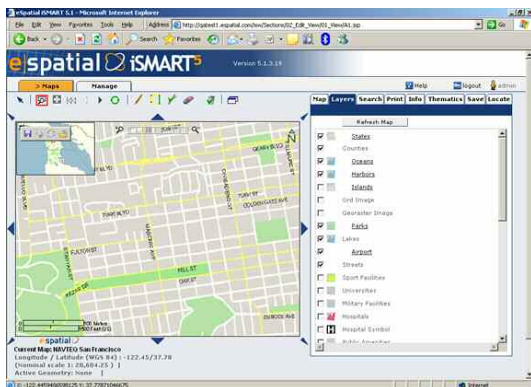


# iSMART<sup>5</sup>

iSMART® is a premier enterprise grade geospatial platform for the rapid delivery of sophisticated web applications while providing a very high return on investment. iSMART enables organizations to quickly and easily build new or extend existing IT applications to include spatial intelligence.

**iSMART provides four main components:**

1. An Out-of-the-Box GeoPortal for publication of maps on an Intranet or the public Internet within hours.
2. A Web-based Spatial Data Management and Map Configuration Tool giving you control over your spatial data through an easy to manage GUI. It is fully compliant with relevant OGC standards.
3. An Advanced GIS Editor, which can be integrated into web-based applications or used disconnected from a central database.
4. A Development Environment for bespoke applications that need to integrate sophisticated spatial functions and deliver these across the Web.



Built on top of the industry standard Oracle 10g platform, iSMART is implemented using standard enterprise technologies. As well as making it easier to integrate spatial intelligence in line-of-business applications, iSMART provides unparalleled enterprise capabilities including security, performance, and scalability.

**Publishing Maps**

iSMART includes an out-of-the box GeoPortal to allow users to rapidly publish and query spatial data in hours rather than weeks.

iSMART GeoPortal provides an easy to use interface, delivering advanced features, including pure web-editing, that allows organizations to deploy and maintain enterprise spatial applications at a fraction of the cost and complexity of alternative solutions.

**iSMART Geoportal**

The GeoPortal comes pre-packaged with an extensive array of standard features, including, navigation and layer controls, sophisticated searching tools, data querying, thematic analysis, printing and pure web editing.

Publishing maps has never been easier. The GeoPortal uses web-based wizards to define the map layers; these can be made available in a secure manner by defining roles for users. Maps can be individually styled and pre-configured, and thematic queries can be pre-defined. Dynamic styling, thematic analysis and printing can be made available to the end user if required.

iSMART GeoPortal can be customized to suit a required look and feel and can be extended with additional functionality for specific applications.

**Pure Web Editing**

A unique feature of iSMART is the ability to digitize and edit spatial data and associated attribute data directly on the displayed map on the web. This is achieved without the need to use any client side software, downloaded applet or plug-in; all that's needed is a browser.

iSMART GeoPortal Users with the appropriate permissions can **create** or **edit** spatial information as well as enter associated attribute details.



**iSMART Server**

iSMART Server is eSpatial's flagship product that provides the capability to rapidly develop, deploy or embed geospatial functionality in an N-Tier enterprise architecture.

Using iSMART server, applications can be deployed in a clustered environment to facilitate fail-over and scalability. The product can also manage spatial and image data that resides in different databases, image data servers, and vector data servers. This allows for high levels of scalability on the database side.

**Spatial Data Management & Configuration**

iSMART provides a central data management and configuration environment for spatial and associated data. Using the iSMART GeoPortal user interface, administrators can manage a variety of data types including Oracle Spatial / Locator Vector, Oracle 10g GeoRaster, Geocode, and Topology. In addition, features are provided to configure required spatial indices, temporal changes and modification monitoring as well as deployment of the iSMART GeoSpatial cache within the Application Server.

Data administrators may also to import and export a number of spatial formats including the loading of industry standard Shape files.

**iSMART® Editor**

iSMART Editor is an enterprise strength tool for advanced spatial editing of Oracle spatial data which complements iSMART's pure web editing features.

iSMART editor can be embedded within a web application or used as a stand alone connected or disconnected application for use in the field.

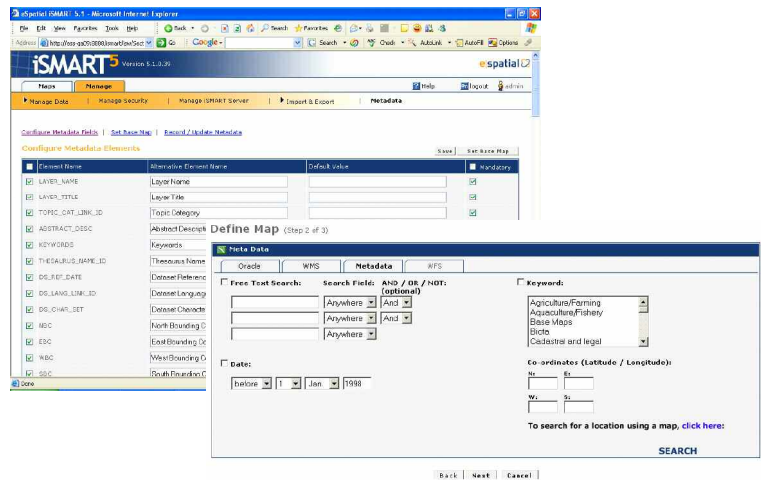
Users can download vector, raster and attribute data and perform data management tasks such as new vector capture with attributes, attribute capture or editing and digitizing over raster data.



**iSMART & Oracle**

iSMART is built on top of the leading Oracle 10g platform and leverages the Oracle technology stack to the maximum.

iSMART supports the spatial capabilities available with the Oracle 10g Database (with Oracle Locator). It also includes support for the latest version of the Oracle Spatial option, Oracle Spatial 10g Release 2, including Oracle 10g GeoRaster data type, topology data model, and the Oracle 10g geocoder.



**iSMART & OGC**

iSMART provides increased industry standards support including the Open Geospatial Consortium (OGC) defined Web Mapping Service (WMS) – server and client, and an OGC Web Feature Service (WFS) server, with continued support for OGC Geography Markup Language (GML)

**Integration & Development**

iSMART easily integrates with other enterprise applications because of its common architecture and support for web services.

iSMART supports standard IT development environments and is ideally suited for integration within line-of-business systems. Most industry standard Java IDEs are supported, with ready-to-use plug-ins for Eclipse and Macromedia Dreamweaver also provided.

iSMART applications can co-exist with other GIS environments, including ESRI, GE-Smallworld, MapInfo and AutoDesk. In addition iSMART has been integrated with Laser-Scan's Radius Topology.

In operational applications, data from live-feeds (such as GPS tracking devices) can be viewed directly from the iSMART cache. This enables rapid visualization of changing inputs against real-world spatial data.

**Compatibility**

iSMART 5 is available on leading platforms including Microsoft Windows 2000, XP, Windows Server 2003, Sun Solaris, Red Hat Enterprise ES3, Novell Suse Enterprise Server 9 (Linux) and BEA WebLogic.